

PRODUCT NUMBER  
SEE SHEET 4

R1.25  
4X

POS.T37

A

B

25.50

28.60

POS.A2

POS.A1

M

53.75

P

PICK-UP CAP

POS.A1 MARKER

10.94±0.25

9.64±0.12

0.20

(0.55)

Ø0.76 SOLDER BALLS

⊕ Ø0.30 P M

666X  
SEE NOTE 2

Copyright FCI.

D

www.fciconnect.com				surface 3.2 ASME Y14.5	tolerance std -	projection ⊕	mm
TOLERANCES UNLESS OTHERWISE SPECIFIED				ANGULAR	LINEAR	size A4	Scale 1:1
Dr	G. PETERS	2002-12-11		0.X	±0.3	ECN	V08-0198
Eng	M. STRAWSER	2002-12-13		0.XX	±0.10	Spec ref	-
Chr	G. PETERS	2002-12-13	0° ±y°	0.XXX	±0.050		
Appr	M. STRAWSER	2002-12-13	Product family	GIG-Array			
				GIG-Array, PLUG ASSEMBLY		dwg no	55720
				10mm, 296 SIGNAL POSITION		Rev.	G
				catalog no	-	CUSTOMER	sheet 1 of 4

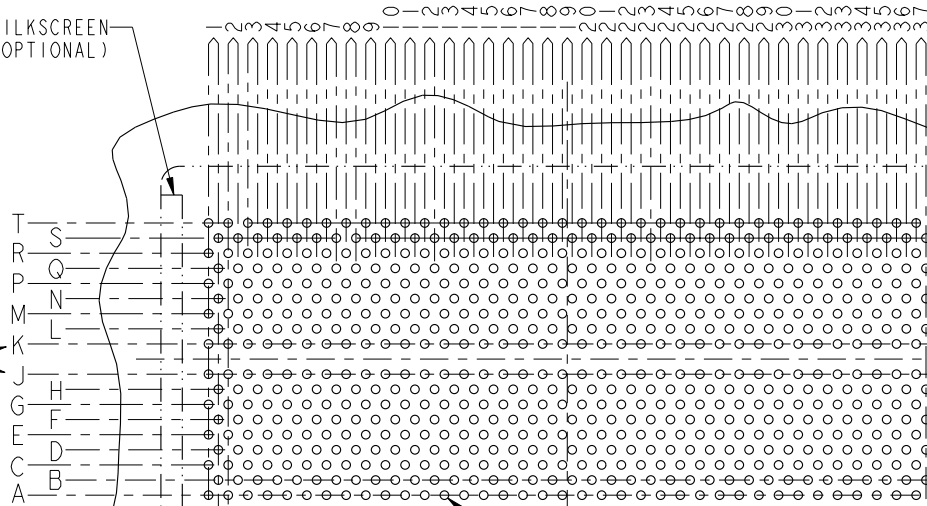
rev	ecn no	dr	date
A	V21718	GIP	2002-12-11
B	V03-0427	TAB	2003-04-16
C	V03-0663	TAB	2003-06-12
D	V06-0052	VS	2005-10-14
E	V06-0558	LP	2006-06-12
F	V07-0440	LP	2007-07-05
G	V08-0198	HTB	2008-04-28

PRODUCT NUMBER  
SEE SHEET 4

KEY ORIENTATION SILKSCREEN  
(OPTIONAL)

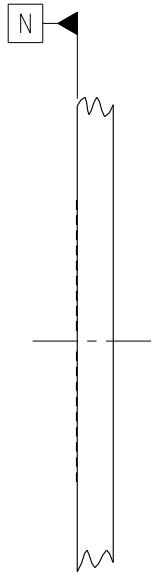
④ CONTACTS IN  
ROWS J & K ARE  
TIED TOGETHER  
(COMMONED)

SEE NOTES 4 & 5



STENCIL CONNECTOR OUTLINE  
ONTO BOARD.

**BOARD PATTERN**



Copyright FCI.



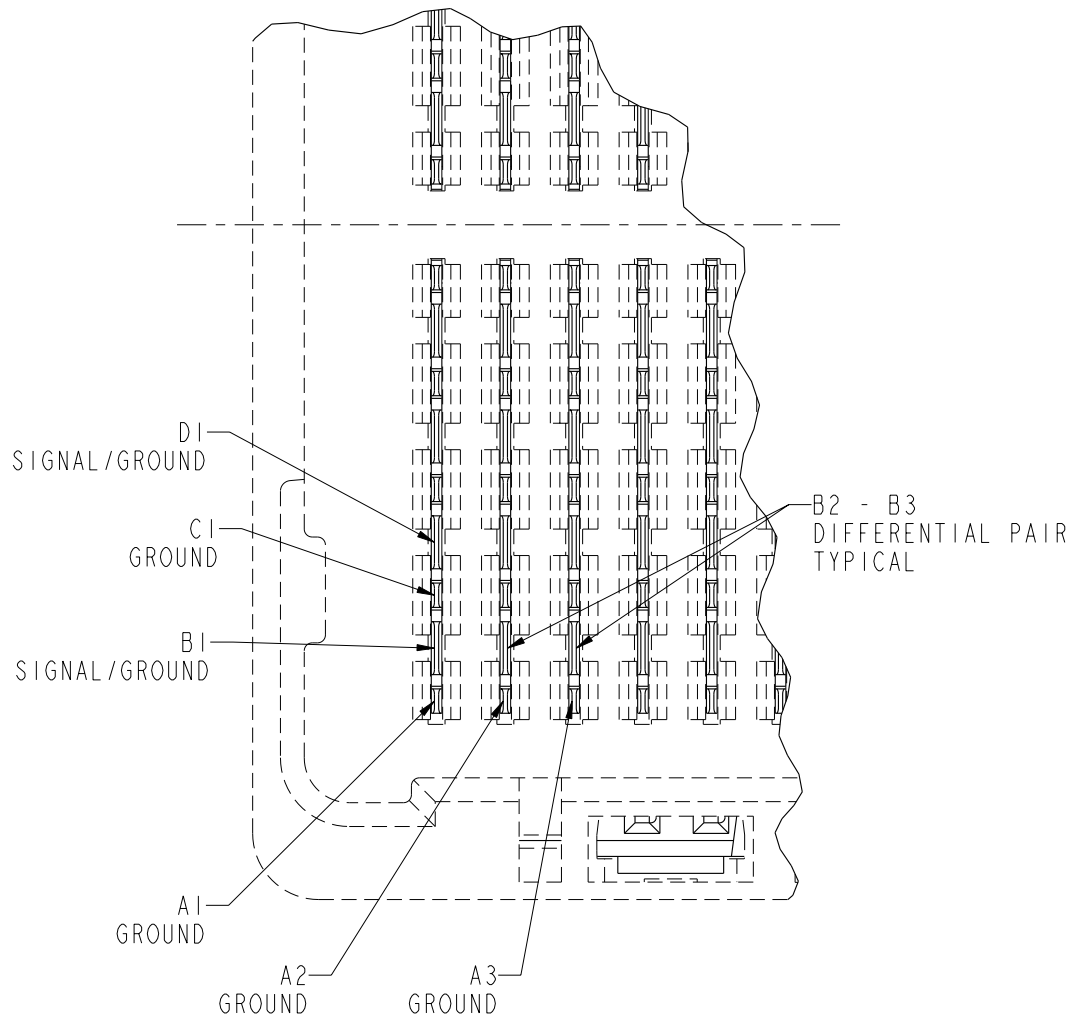
title GIG-Array, PLUG ASSEMBLY  
10mm, 296 SIGNAL POSITION  
catalog no -

dwg no 55720

Rev. G

CUSTOMER sheet 2 of 4

PRODUCT NUMBER  
SEE SHEET 4



**PLUG INTERFACE  
DESCRIPTION**



title GIG-Array, PLUG ASSEMBLY  
10mm, 296 SIGNAL POSITION  
catalog no -

dwg no 55720

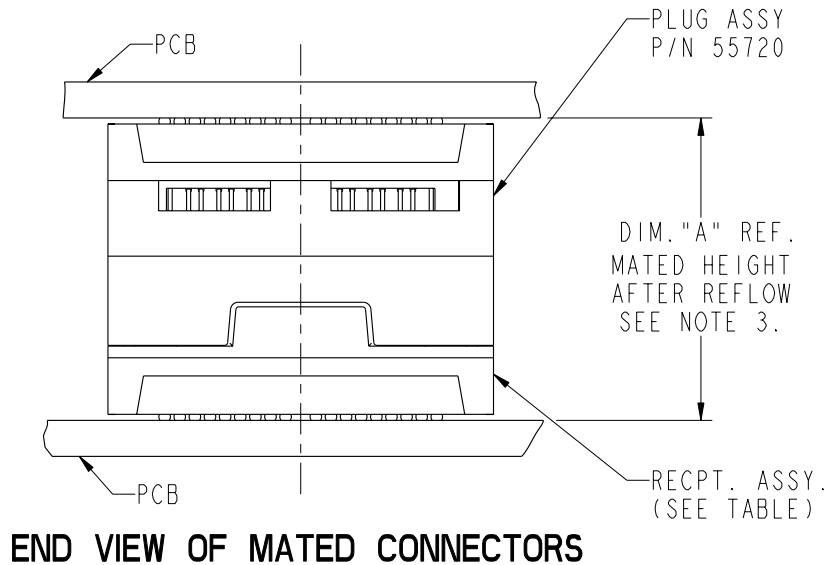
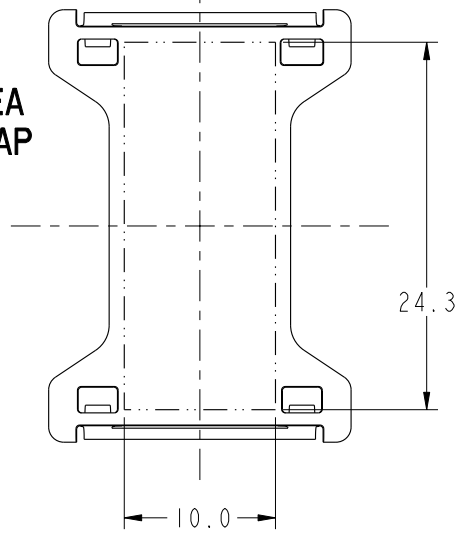
Rev. G

CUSTOMER sheet 3 of 4



PRODUCT NUMBER	SOLDER BALL
55720-001	SnPb
55720-001LF	SnAgCu LEADFREE (7)(8)

**FLAT AREA PICK-UP CAP**



**END VIEW OF MATED CONNECTORS**

DIM. "A"	RECPT. ASSY. P/N
15	55701
25	55733

NOTES:

- ① MATERIAL:  
HOUSING: LCP  
CONTACT: COPPER ALLOY  
PLATING (CONTACT): Au OVER Ni.  
UL RATING: 94 V-0  
SOLDER BALL: (SEE TABLE) EUTECTIC SnPb OR LEADFREE 95.5 Sn/4Ag/0.5Cu
- ② SOLDER BALLS WILL NOT BE PERFECT SPHERICAL SHAPE DUE TO REFLOW ATTACHMENT.
- ③ MATED HEIGHT EFFECTED BY CUSTOMERS' PCB PAD SIZE, PLATING, SOLDER REFLOW PROFILE & SOLDER PASTE.
- ④ CONTACTS IN ROWS A,C,E,G,J,K,M,P,R AND T ARE SINGLE BEAM CONTACTS, TYPICALLY USED AS GROUND PINS. (NOTE: CONTACTS IN ROWS J & K ARE TIED TOGETHER [COMMONED])
- ⑤ CONTACTS IN ROWS B,D,F,H,L,N,Q AND S ARE DUAL BEAM CONTACTS, TYPICALLY USED AS SIGNAL PINS.

NOTES CONTINUED

- ⑥ SPECIFIED POSITIONAL TOLERANCE DEFINES PAD TO PAD LOCATION WITHIN LAND PATTERN. POSITIONAL TOLERANCE OF LAND PATTERN TO FUDICIAL MARKS OR PCB DATUMS SHALL BE DEFINED BY CUSTOMER. FOR RECOMMENDED PRODUCT APPLICATION AND PCB DESIGN DETAILS, SEE DOC. NO. GS-20-016.
- ⑦ FOR PROPER APPLICATION FOLLOW FCI APPLICATION SPECIFICATION GS-20-033 LEADFREE SOLDER BALLS WILL NOT SOLDER PROPERLY IN A LEADED SOLDER PROCESS DUE TO A HIGHER REFLOW TEMPERATURE, LEADFREE PRODUCT IS THEREFORE NOT BACKWARDS COMPATIBLE WITH LEADED OR SOME SOLDERING APPLICATIONS. REFERENCE FCI APPLICATION SPECIFICATION.
- ⑧ THIS PRODUCT MEETS THE EUROPEAN UNION DIRECTIVES AND OTHER COUNTRY REGULATIONS AS DESCRIBED IN GS-22-008. PRODUCT MEETING WITH THES DIRECTIVE IS IDENTIFIED IN THE LOT CODE NUMBER MARKED ON EACH PART BY HAVING AN "X" IN THE SEVENTH CHARACTER POSITION.



Copyright FCI.



GIG-Array, PLUG ASSEMBLY 10mm, 296 SIGNAL POSITION	dwg no	55720	Rev.	G
	catalog no	-	CUSTOMER	sheet 4 of 4